



IndigoVision®

a Motorola Solutions Company

ULTRA RANGE

30x
Optical



HD Ultra Pendant PTZ Camera

Capture every detail with ultra-high resolution

With best in class performance, the IndigoVision HD Ultra Pendant PTZ Camera delivers rich, Full HD video and image clarity, in all lighting conditions. Image stabilisation and ultra-low PTZ latency gives smoother operator viewing and control. IndigoVision's SMART.core™ technology gives highly optimised H.265 compression, reducing storage costs by up to 95%.

Key Features

SENSOR



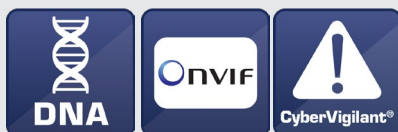
COMPRESSION



INTELLIGENCE



OTHER



PHYSICAL

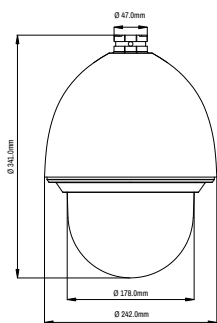


Product Codes

HD Ultra PTZ Dome Cameras	Product Code
HD Ultra Pendant PTZ, 30x Lens	710560

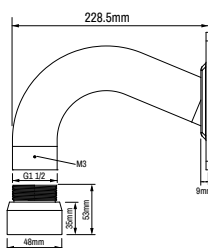


Dimensions

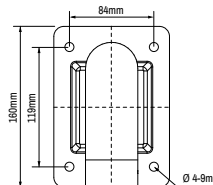


View on Side Face

Dimensions: Wall Mount



View on Side Face



View on Front Face

Specification

Camera Features			
Sensor	1/1.9" Progressive CMOS		
Active Pixels (HxV)	HD (1920 x 1080)		
Minimum Sensitivity	Day: 0.002 Lux (colour). Night: 0.0002 Lux (mono). 30 IRE, F1.5, 1/30s shutter		
Dynamic Range	WDR 120dB		
Gain Control	Auto/Manual		
Back Light Compensation	Off/BLC/HLC/WDR		
White Balance Mode	Auto/ATW/Indoor/Outdoor/Manual /Sodium Lamp/Natural/Street Lamp		
Day/Night	True Day/Night with Mechanical IR Cut Filter		
Video Resolution	1920x1080 pixels (HD); 1280x960 pixels (1.3MP); 1280x720 pixels (720p); 704x576 pixels (D1); 704x480 pixels (D1) 352x288 pixels (SIF); 352x240 pixels (SIF)		
Signal/Noise Level	> 56dB		
Lens Options	5.9mm - 180mm, Horizontal view angle 61.2° (W) 2.1° (T), F1.5 to F4.3 Autofocus with manual override		
Zoom	30x optical + 16x digital		
Iris Control	Automatic with Manual override		
Shutter	Rolling; Auto from 1/1 to 1/30,000 sec		
Exposure Control	Auto/Aperture Priority/Shutter Priority/Gain Priority/Manual		
Image Stabilizer	Yes		
Video Compression	Full frame rate, full colour: H.265 ^A /H.264/MJPEG up to 30fps		
Video Bit Rate	User-configurable from 24Kbps up to 8Mbps		
Video Multi-Streaming	Up to 32Mbps total video output. Unlimited multicast connections; Up to eight 4Mbps unicast connections		
Video Multi-Encoder	Up to two simultaneous resolutions with frame rate including: up to 1080p (30fps) plus up to 1080p (30fps) or lower		
Video Analytics	ACF, ACF+, Motion Detection, Tripwire, Intrusion, Abandoned Object, Missing Object, Scene Change, Video Tamper, Face Detection		
Intelligence	Heat Map		
Audio Compression	G.711Mu/AAC		
Audio Bit Rate	16-96Kbps per channel		
Audio Dual Encoder	Main Stream: 1 Stream Configuration plus Sub Stream: 1 Stream Configuration		
Audio Resolution	G.711Mu 8 KHz sample rate, AAC is configurable with options 8, 16, 32 and 48 KHz		
Audio Analytics	Audio Input Abnormal, Audio Intensity High		
Audio Input	1x Line in		
Audio Output	1x Line out		
Binary Input/Output	7 Pull up input for non powered contacts; 2 Solid state open collector output, Max 20VDC 1A		
Network Interface	IEEE802.3 and IETF standards: 100/1000 Base-T Ethernet, IPv4/IPv6, TCP, UDP, RTP, RTSP, ICMP, IGMP, SNMP, HTTP, HTTPS, PPPoE, uPnP, QoS, DHCP, DNS		
Network Security	HTTPS, IP Filter, IEEE 802.1x		
CyberVigilant® Technology	Yes		
Time	Embedded real-time clock, NTP client		
SD Storage	microSDXC upto 128GB support (card not included)*		
Dimensions/Weight	242mm (dia) x 341mm (h) and 8.25kg (with sun shield)		
Regulatory	EN 55032, EN 50130-4, EN 55024, EN 61000-3-2, EN 61000-3-3, CFR47 part 15 Subpart B, UL60950-1, EN60068-2-6, EN 60068-2-64, EN 60068-2-27, EN 60068-2-1, EN 60068-2-2, EN 60068-2-30, EN 60529, EN 62262		
Housing	Vandal resistant aluminium alloy and Polycarbonate/ABS housing and clear polycarbonate dome included		
Protection Rating	IP67, IK10		
Electrical	24V AC @1.8A; 43W		
Operating Temperature	External PSU: -40°C to 70°C		
Cold Start	-30°C		
Supplied Accessories	Wall Mount bracket with 1.5" BSP Thread Adaptor		
IndigoVision Software Requirements	Control Center v15.4 or later		
Supported Internet Browsers	Internet Explorer v11.0 or later		
ONVIF	Profile S		
PTZ Control			
Preset	300	Privacy Zones	24 User Defined
Preset Tours	8 each with 32 presets	Pan Range	360° Continuous Rotation
Pattern/Mimic tours	5 each with up to 10 minutes	Tilt Range	110° (-20° above horizon to 90° vertically down)
Picture Freeze Option	Yes	Pan/Tilt Speed	Pan - 0.1°/s to 300°/s, Tilt - 0.1°/s to 150°/s
		Pan/Tilt Warranty	Moving part warranty limited to 2 million Pan and Tilt Operations

* SDCard Storage independent of IndigoVision's NVRs.

^A H.265 requires Control Center 16.0 or later.