



IndigoVision

BX RANGE



8MP Panoramic Dome Camera

Amazing Megapixel video that delivers detail from every angle

Part of IndigoVision's professional BX Range, the Panoramic Dome Camera delivers 180° visibility with pin-sharp detail. Video is seamlessly stitched into a single image direct from the camera. When used as part of IndigoVision's end-to-end system, any single point of failure is removed through IndigoVision's Distributed Network Architecture (DNA) technology.

Key Features

SENSOR

8MP	Day/Night	WDR
------------	-----------	-----

COMPRESSION

H.264	UP TO 25fps	G.711
--------------	--------------------	-------

INTELLIGENCE

Analytics	Motion Detection
-----------	------------------

OTHER

DNA	PoE+	ONVIF
-----	------	-------

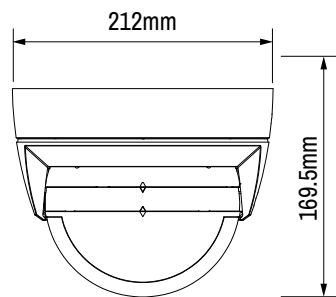
PHYSICAL

Outdoor	IR	IK10
---------	----	------

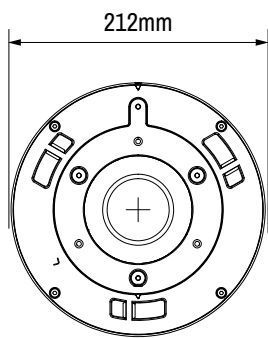
Product Codes

BX720 Panoramic Dome Camera	Product Code
BX720 8MP 180° Panoramic Dome Camera with Built-In IR Illuminator	613740

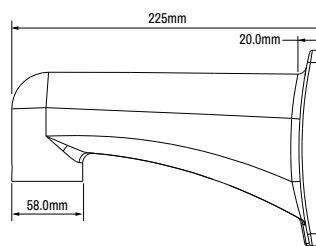
Dimensions



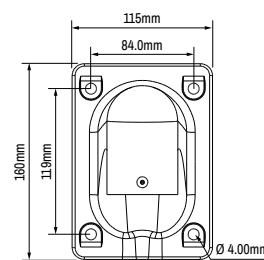
View on Side Face



View on Top Face



Wall Mount Bracket (Side Face)



Wall Mount Bracket (Front Face)

Specification

Camera Features	
Sensor	Four 1/2.8" 2 Megapixel Progressive Scan CMOS
Active Pixels (HxV)	8MP (4096 x 1800)
Minimum Sensitivity	Day: 0.05 lux (colour). Night: 0.005 lux (mono). 30 IRE, F2.0, 1/30s shutter
Dynamic Range	WDR >100dB
Gain Control	Auto/Manual
Back Light Compensation	BLC / HLC / DWDR
White Balance Mode	Auto / Natural / Street Lamp / Outdoor / Manual
Day/Night	True Day/Night with Mechanical IR Cut Filter
IR Illuminator	Built-in IR Illuminator 850nm wavelength, effective distance >30m, 180°
Video Resolution	4096x1800; 3840x1680; 2880x1264; 1024x452
Lens Options	Four 3.0mm, Horizontal view angle 180°, Vertical view angle 80°, F2.0, Fixed Iris, board mount
Video Compression	Full frame rate, full colour: H.264/MJPEG; up to 25fps (ISO 14496-10)
Video Bit Rate	User-configurable bit rates from 500Kbps up to 10Mbps
Privacy Zones	Off / On (4 Area, Rectangle)
Video Multi-Streaming	Up to 32Mbps total video output; Unlimited multicast connections. Up to four 8Mbps unicast connections
Video Multi-Encoder	Up to two simultaneous resolutions including: 4096x1800@25fps plus 1024x452@25fps (PAL Region) or 4096x1800@20fps plus 1024x452@30fps (NTSC Region)
Video Analytics [^]	Motion Detection, Tripwire, Intrusion, Abandoned Object, Missing Object, Scene Change, Video Tamper, Face Detection
Intelligence	People Counting, Heat Map
Audio Compression	G.711, AAC
Audio Bit Rate	32Kbps per channel
Audio Resolution	Full Duplex. Mono Input, Mono Output G.711: 8kHz sample rate. AAC: 8kHz, 18kHz, 32kHz or 48kHz sample rate
Audio Analytics [^]	Audio Input Abnormal, Audio Intensity High
Audio Input	Line in, RCA connector
Audio Output	Line out, RCA connector
Binary Input/Output	2 Pull up input for non powered contacts; 2 Solid state open collector output, Max 30.0V, 0.5A
Network Interface	IEEE802.3 and IETF standards: 100/1000 Base-T Ethernet, HTTP; HTTPS; TCP; ARP; RTSP; RTP; UDP; SMTP; FTP; DHCP; DNS; DDNS; PPPOE; IPv4/v6; QoS; UPnP; NTP; Bonjour; 802.1x; Multicast; ICMP; IGMP; SNMP
Network Security	HTTPS, IP Filter, IEEE 802.1x
Time	Embedded real-time clock, NTP client
SD Storage	microSDHC 128GB support (card not included)*
Dimension/Weight	212mm (dia) x 169.5mm (h) and 3.6Kg
Regulatory	EN 55032, EN 55024, EN 61000-3-2, EN 61000-3-3, FCC Part 15 Subpart B Class A, EN 50130-4, EN61000-4-2, EN61000-4-3, EN61000-4-4, EN61000-4-5, EN61000-4-6, EN61000-4-8, EN61000-4-11, IEC60068-2-27 (Shock), IEC60068-2-6 (Sine Vibration), UL60950-1
Housing	White vandal resistant aluminium alloy including 400mm cable bundle
Protection Rating	IP67, IK10 (IEC 62262)
Electrical	PoE+ (802.3at Class 4) or 24V AC @1.1A; 20W
Operating Temperature	-40°C to 60°C
Cold Start	-20°C
Supplied Accessories	Wall Mount Bracket
IndigoVision Software Requirements	Control Center v14.0 or later
Supported Internet Browsers	Internet Explorer v11.0 or later
ONVIF	Profile S

* SDCard Storage independent of IndigoVision's NVRs.

[^] Integration into Control Center as Basic Analytics only