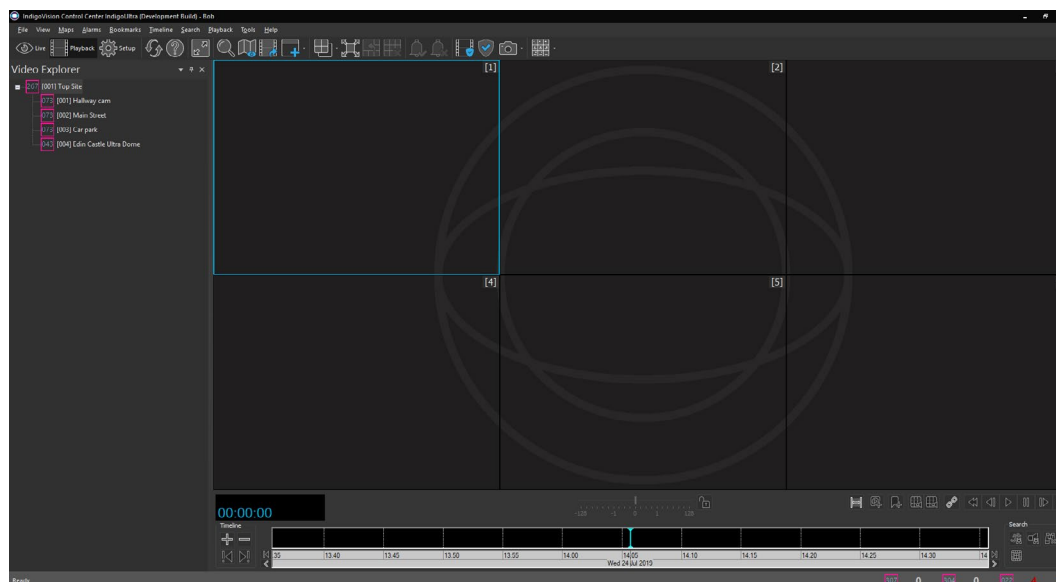


VIDEO DISPLAY

Display 4-view (2x2)	F7
Display 9-view (3x3)	F9
Display 16-view (4x4)	F10
Display 25-view (5x5)	F2
Maximize current pane	F6 (Toggles)
Show video panes	F12 (Toggles)
Display video in full screen	F11 (Toggles)
Display hot spot in top left pane plus 5 smaller panes	F8
Display hot spot in top left pane plus 7 smaller panes	SHIFT F10
Display hot spot in top left pane plus 9 smaller panes	SHIFT F2
Display a center hot spot plus 12 smaller panes	CTRL F10
Display a center hot spot plus 16 smaller panes	CTRL F2
Take snapshot of current video	F4
Show Analytics	Ctrl H
Go to pane on right	Alt →
Go to pane on left	Alt ←
Go to pane above	Alt ↑
Go to pane below	Alt ↓
Add bookmark	Alt C
Quick add bookmark	Alt B



PLAYBACK VIEW

Display Playback view	Ctrl P
Create alarm report	Ctrl R
Show/Hide playback controls and timeline	Alt P
Play/pause video	Rtrn
Rewind video	Alt R
Stop video	Alt S
Fast forward video	Alt F
Expand timeline	+ or Scroll Up
Contract timeline	- or Scroll Down
Scroll timeline forward	Page Down or Ctrl + Scroll Down
Scroll timeline back	Page Up or Ctrl + Scroll Up
Go to start of timeline footage	Home
Go to end of timeline footage	End
Find audio	Ctrl Shift A
Find motion	Ctrl Shift M
Stop motion search	Shift Break
Listen to audio from selected pane	A
Go to next alarm or motion	Ctrl →
Go to previous alarm or motion	Ctrl ←
Step forward by a frame	Shift →
Step backward by a frame	Shift ←
Display Site Search	Ctrl S

ALL USERS

Display help	F1
Refresh screen	F5
Select all	Ctrl A
Clear alarm	Ctrl Enter
Exit Control Center	Alt F4

ADMINISTRATORS ONLY

Display Setup view	Ctrl M
Find recordings/alarms	Ctrl F
Delete	Del
Change number	Ctrl Shift N
For cameras and monitors, with device selected	
Renumber	Ctrl B
For cameras and monitors, with more than one device selected	

LIVE VIEW

Display Live view	Ctrl L
Stop video	Alt S
Display PTZ Control Panel	Ctrl T
Display stream statistics	Ctrl Alt S
Display available actions	Alt A
Listen to audio from selected pane	A
Speak to someone on camera in selected pane	S
Go to next camera	→
Go to previous camera	←
Display Site Search	Ctrl S