

INDIGOVISION SERIAL CABLE ACCESSORY GUIDE

OVERVIEW

The Serial Cable is available to provide a standard 9 pin DSUB interface to the console serial port on IndigoVision cameras.

This guide details the wiring requirements for common cameras as well as configuration instructions for the cameras.

Package Contents

- Serial cable (9-pin DSUB with 3x tinned bare wires)
- 3m null modem cable

SERIAL CABLE

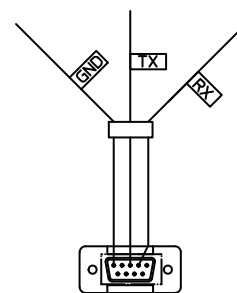


Figure 1 Serial cable

9 way DSUB Pin Number	Signal Name	Description
2	Rx	Black wire
3	Tx	Red wire
5	Gnd	Drain wire

SAFETY NOTICES

Warnings

This product is designed for indoor applications and must not be installed outdoors or exposed to rain or moisture.

Notices

Read the User Guide for the camera before using this accessory.



Document ID: IU-ACC-MAN001-1

9000 FIXED DOME CABLE WIRING

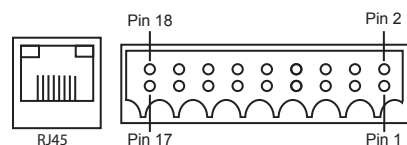


Figure 2 Camera connections

Use the following table to wire the serial cable to a terminal block for use with the 9000 Fixed Dome.

Signal Name	IO Connector Pin Number	9 Way DSUB Pin Number
Rx data	11	2
Tx data	12	3
Gnd	9	5

9000 FIXED CAMERA CABLE WIRING

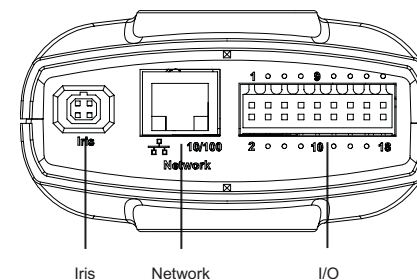


Figure 3 Back panel connections

Use the following table to wire the serial cable to a terminal block for use with the 9000 Fixed Camera.

Signal Name	IO Connector Pin Number	9 Way DSUB Pin Number
Rx data	11	2
Tx data	12	3
Gnd	9	5

11000 FIXED CAMERA CABLE WIRING

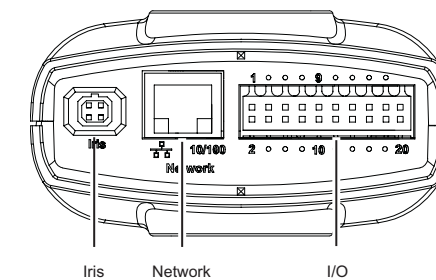


Figure 4 Back panel connections

Use the following table to wire the serial cable to a terminal block for use with the 11000 Fixed Camera.

Signal Name	IO Connector Pin Number	9 Way DSUB Pin Number
Rx data	11	2
Tx data	12	3
Gnd	9	5

COPYRIGHT © INDIGOVISION LIMITED. ALL RIGHTS RESERVED.
INDIGOVISION IS A TRADEMARK OF INDIGOVISION LIMITED AND IS REGISTERED IN CERTAIN COUNTRIES. SMS4, CAMERA GATEWAY, AND MOBILE CENTER ARE UNREGISTERED TRADEMARKS OF INDIGOVISION LIMITED. ALL OTHER PRODUCT NAMES REFERRED TO IN THIS MANUAL ARE TRADEMARKS OF THEIR RESPECTIVE OWNERS.
THIS MANUAL IS PROVIDED WITHOUT EXPRESS REPRESENTATION AND/OR WARRANTY OF ANY KIND.

PLEASE CONTACT INDIGOVISION LIMITED (EITHER BY POST OR BY E-MAIL AT PARTNER.SUPPORT@INDIGOVISION.COM) WITH ANY SUGGESTED CORRECTIONS AND/OR IMPROVEMENTS TO THIS MANUAL.

CONTACT ADDRESS

CHARLES DARWIN HOUSE,
EDINBURGH TECHNOPOLE,
EDINBURGH, EH26 0PY, UK

FURTHER INFORMATION

YOU CAN DOWNLOAD A COPY OF THIS GUIDE FROM:

WWW.INDIGOVISION.COM/SERIALCABLE-GUIDE

ALTERNATIVELY, SCAN THE QR CODE BELOW.



4-CHANNEL RACK CABLE WIRING

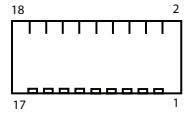


Figure 5 Rack terminal block connections

Use the following table to wire the serial cable to a terminal block for use with the 4-Channel Rack.

Signal Name	IO Connector Pin Number	9 Way DSUB Pin Number
Rx data	11	2
Tx data	12	3
Gnd	13	5

CONFIGURING A DEVICE USING THE SERIAL CABLE

To configure your device via the console port using the serial cable, you need to power the device, for example, using power over Ethernet (PoE) or an auxiliary power supply.

For more information, refer to the device's User or Hardware Guide.

1. Wire the Serial Cable as shown in this guide.
2. Connect the cable to the device.
3. Connect the 9-way DSUB end of the serial cable to a PC serial port using the null modem serial cable.
4. On the PC, use a Terminal Emulation program such as Windows HyperTerminal and set the serial port parameters as follows:
 - 115200 baud
 - 8 bits
 - No parity
 - 1 stop bit
 - Flow Control: None
5. Switch on the power supply to apply power to the device, or, if using Power over Ethernet, plug in the network cable. Allow about a minute for the camera to boot up.
6. Connect to the device and press **Enter**. You should see a prompt similar to the following:

```
IV9000/9600-Tx-Audio Version vx-xx-x
Device Type : Transmitter
Location : unknown
Network Settings : [ 10.5.1.10 / 255.0.0.0 /
10.0.0.1 ]
IV9000 login:
```

If no prompt is displayed, the serial port may be configured as a data port. For more information, refer to the device's User or Hardware Guide.

7. Log in to the device using the username "config" and password "config". The device prompts you to enter the new configuration values. At each prompt, press **Enter** to accept the current value.
 - **Use DHCP (y/n)** — Enter **y** to use DHCP for IP configuration, or **n** for manual IP configuration.
 - **IP Address** — Enter the IP address of the unit.
 - **Subnet Mask** — Enter the IP network subnet mask.
 - **Default Gateway** — Enter the appropriate default gateway for remote network access: this is only required if the devices are to be accessed from a different subnet.
 - **Host name** — Enter a name to describe the unit.
 - **Location** — Enter a name to describe the location of the unit.
 - **Link type** — Enter a link type. The values are as follows:
 - 0 - 10Mbps Half-Duplex
 - 1 - 10Mbps Full-Duplex
 - 2 - 100Mbps Half-Duplex
 - 3 - 100Mbps Full-Duplex
 - 4 - Auto-negotiate

You may need to change the Ethernet link type default value from Auto-negotiate for some network devices. If you have problems maintaining a network link, contact your system administrator to determine the appropriate setting.

- **Reset Network Security to factory defaults (y/n) ?** — Enter **y** to reset the unit's password and network security settings. This will enable unrestricted access to the configuration pages, and is the only way to reset the password on the device. Enter **n** if you do not want to make changes to the device's network security.

20-CHANNEL RACK CABLE WIRING

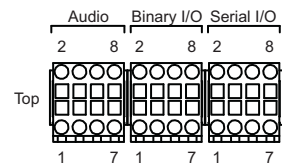


Figure 6 Rack terminal block connections

Use the following table to wire the serial cable to a terminal block for use with the 20-Channel Rack.

Signal Name	IO Connector Pin Number	9 Way DSUB Pin Number
Rx data	Serial I/O: 8	2
Tx data	Serial I/O: 7	3
Gnd	Serial I/O: 6	5